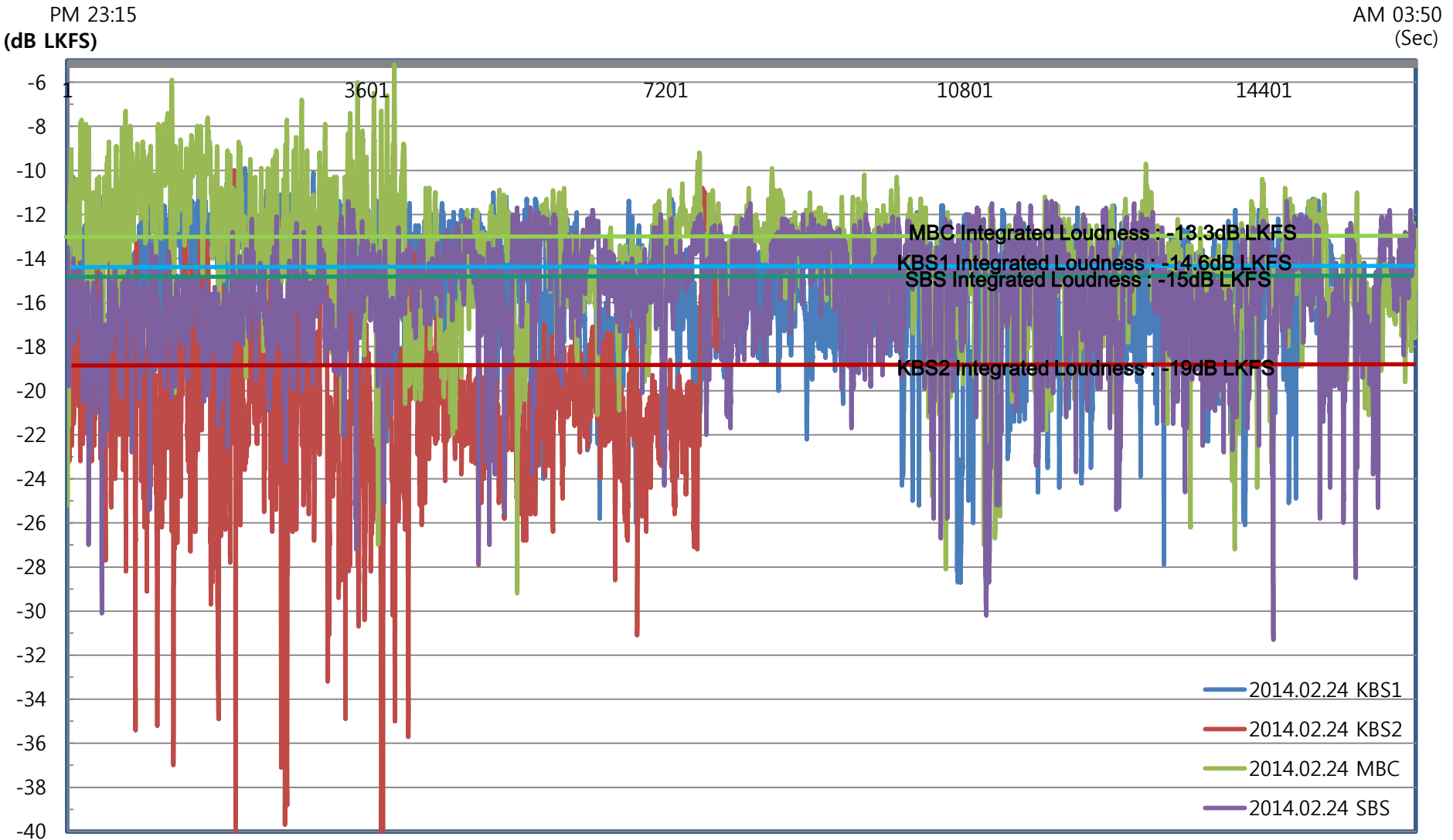


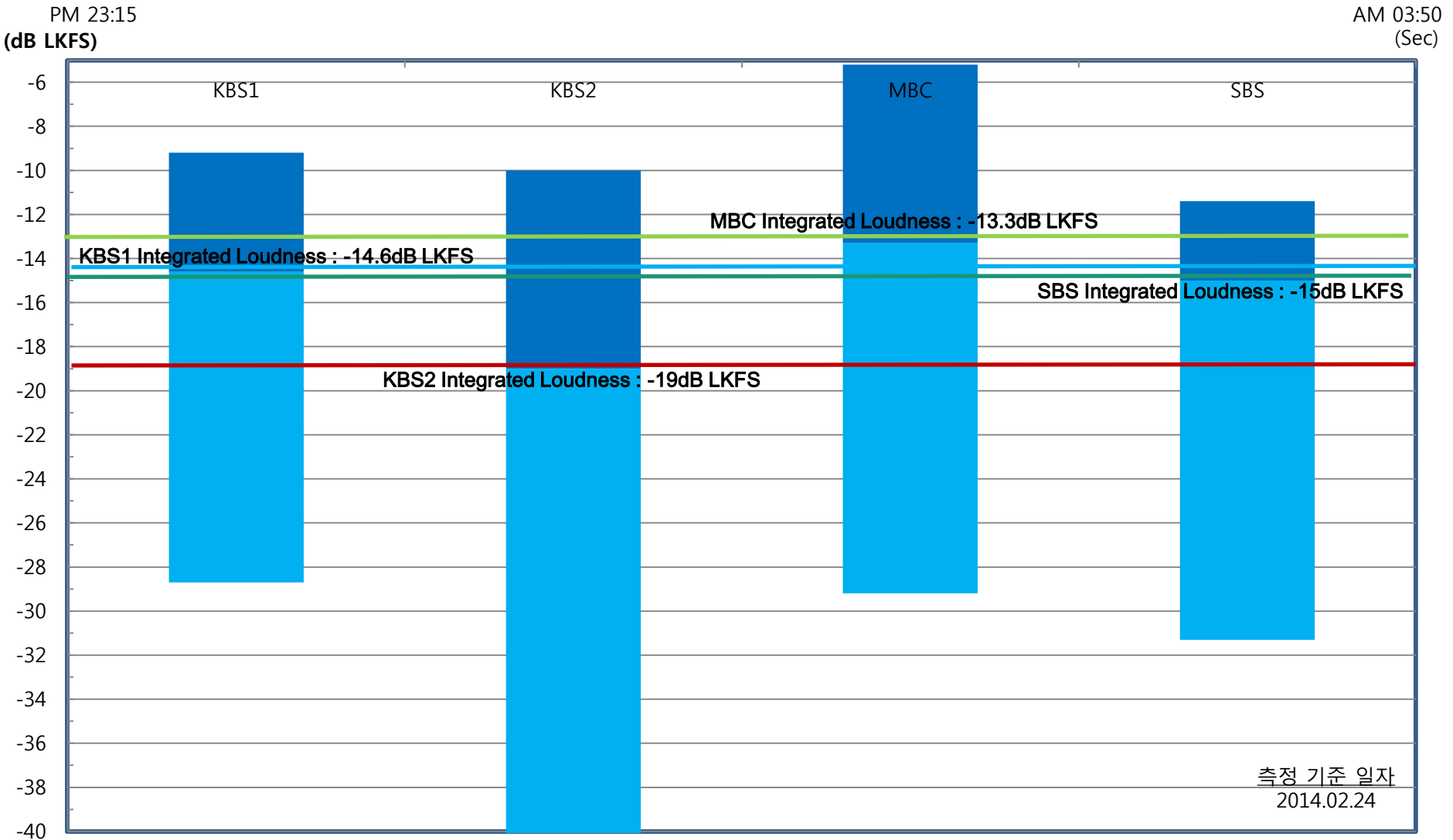
방송 3사 측정(2014.02.24)

ITU-R BS.1770 Short-term Mode 라우드니스 비교분석



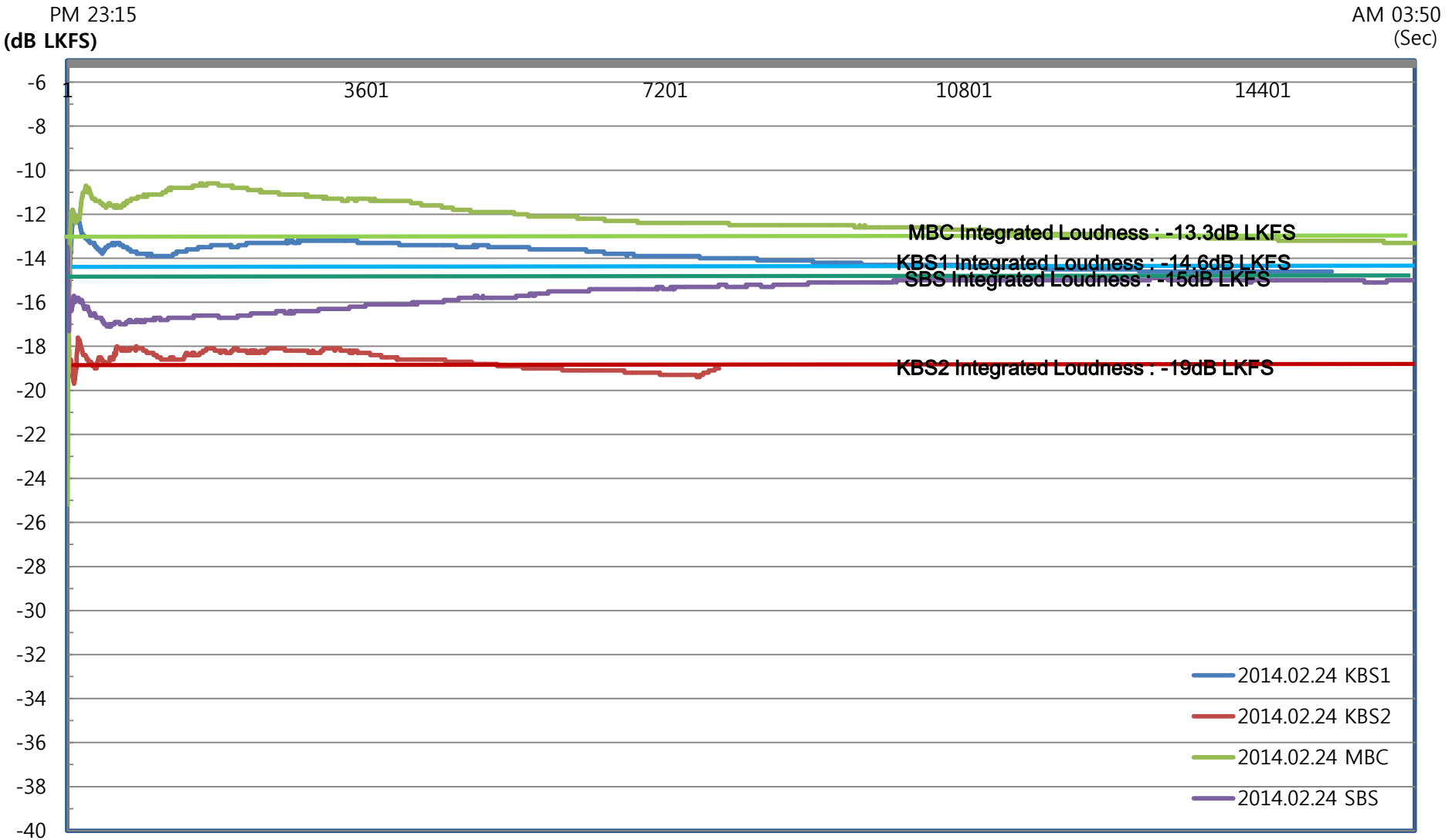
방송 3사 측정(2014.02.24)

ITU-R BS.1770 Short-term Mode 라우드니스 비교분석



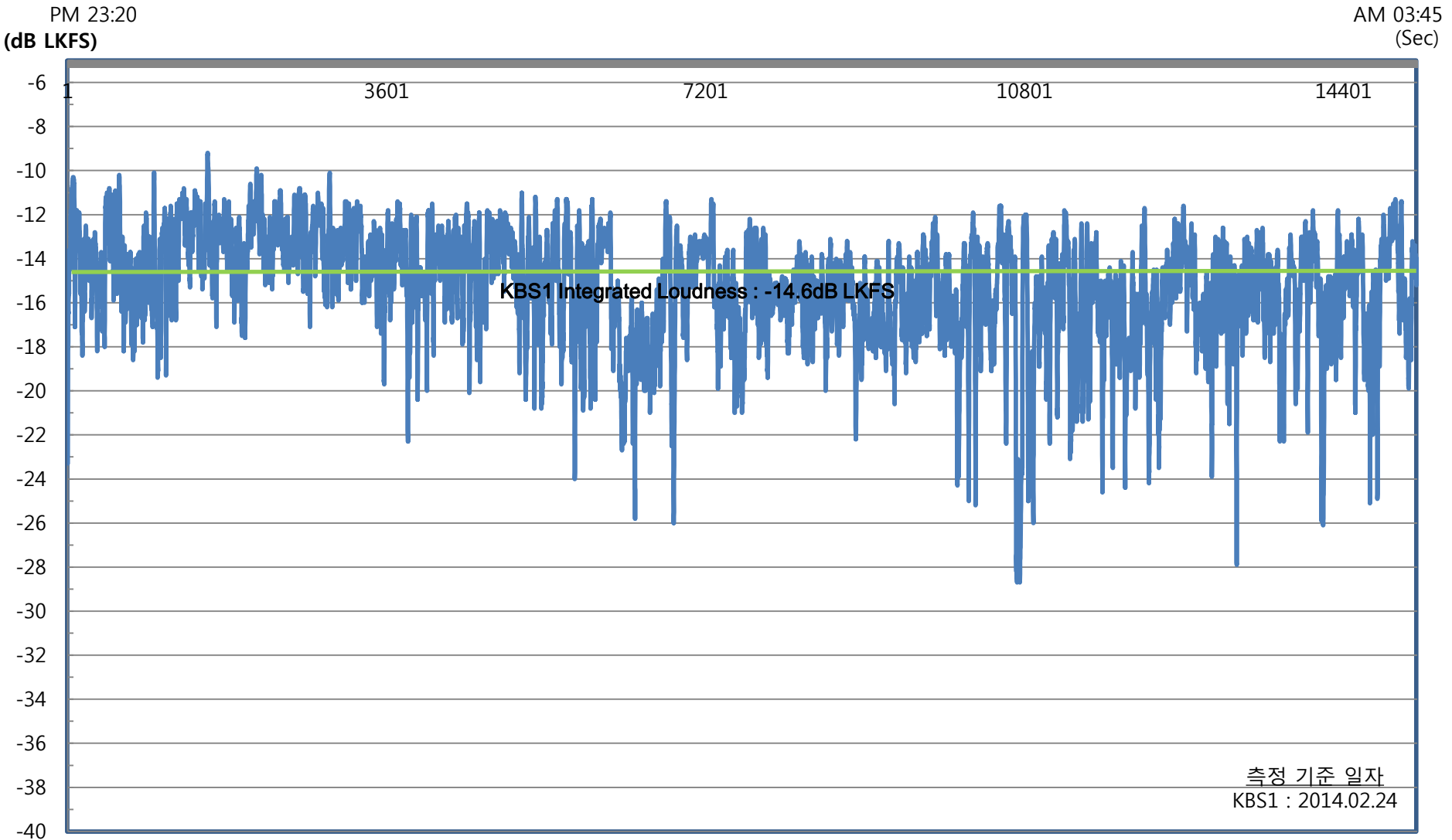
방송 3사 측정(2014.02.24)

ITU-R BS.1770 Infinite 분석



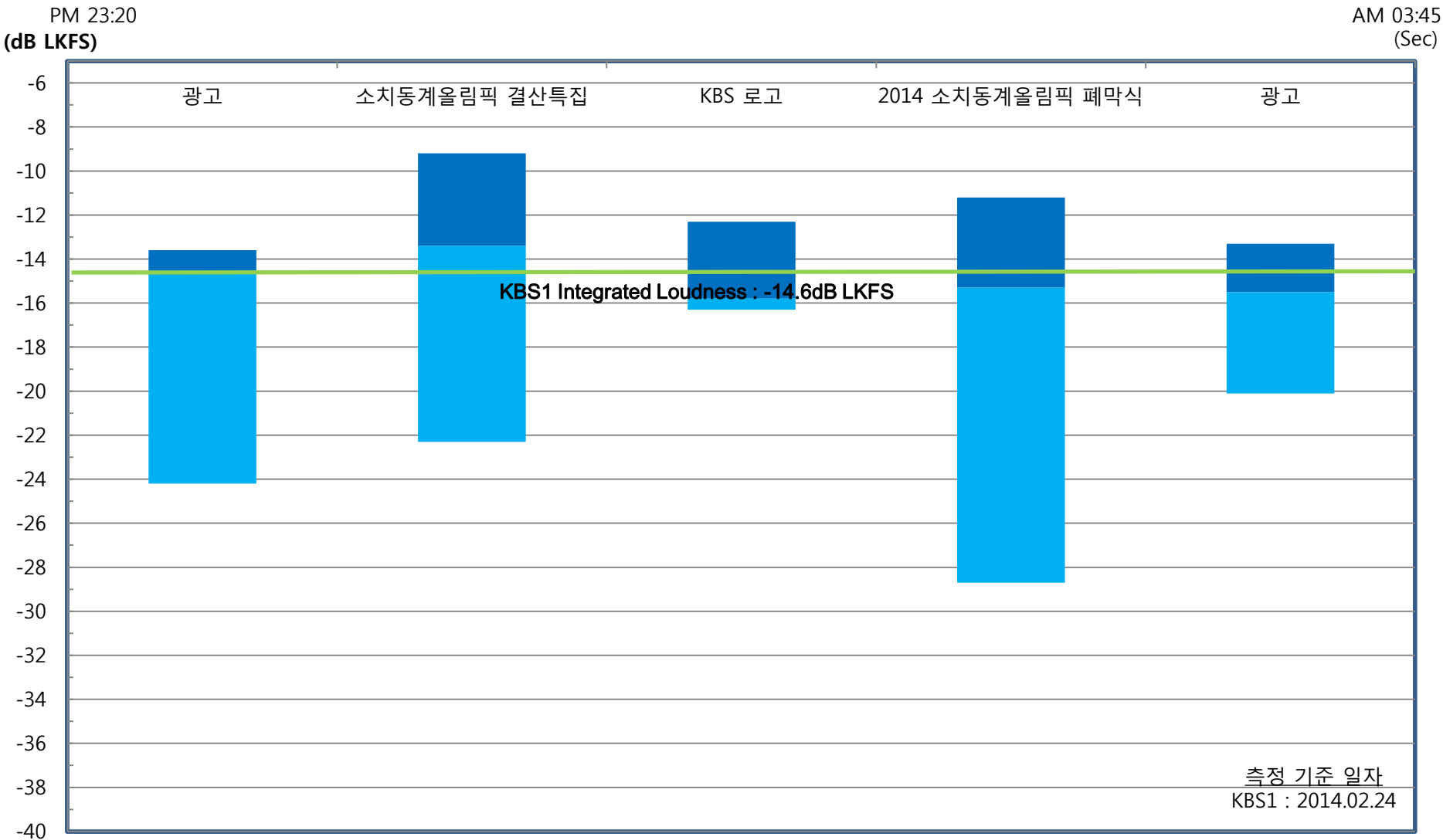
KBS1(2014.02.24)

ITU-R BS.1770 Short-term Mode 라우드니스 비교분석



Infinite All [LKFS]	True Peak [dBTP]	Short-Term All Range [LKFS]	
-14.6	0.2	-28.7	-9.2

KBS1 프로그램 별(2014.02.24) ITU-R BS.1770 Short-term Mode 라우드니스 비교분석



Infinite All [LKFS]		True Peak [dBTP]	Short-Term All Range [LKFS]	
-14.6		0.2	-28.7	-9.2

KBS1(2014.02.24)

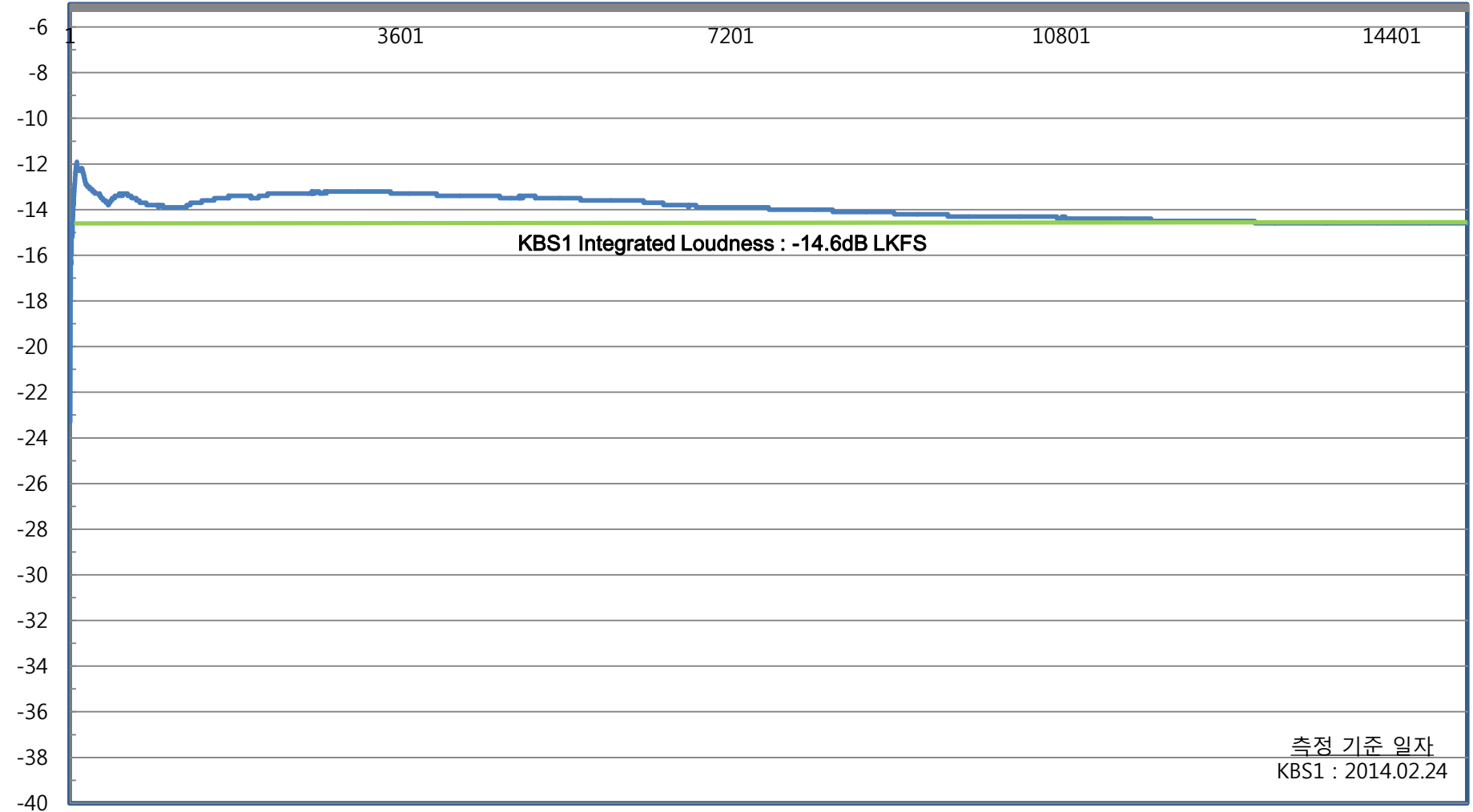
ITU-R BS.1770 Infinite 분석

PM 23:20

AM 03:45

(dB LKFS)

(Sec)



Infinite All [LKFS]	True Peak [dBTP]	Short-Term All Range [LKFS]	
-14.6	0.2	-28.7	-9.2

KBS2(2014.02.24)

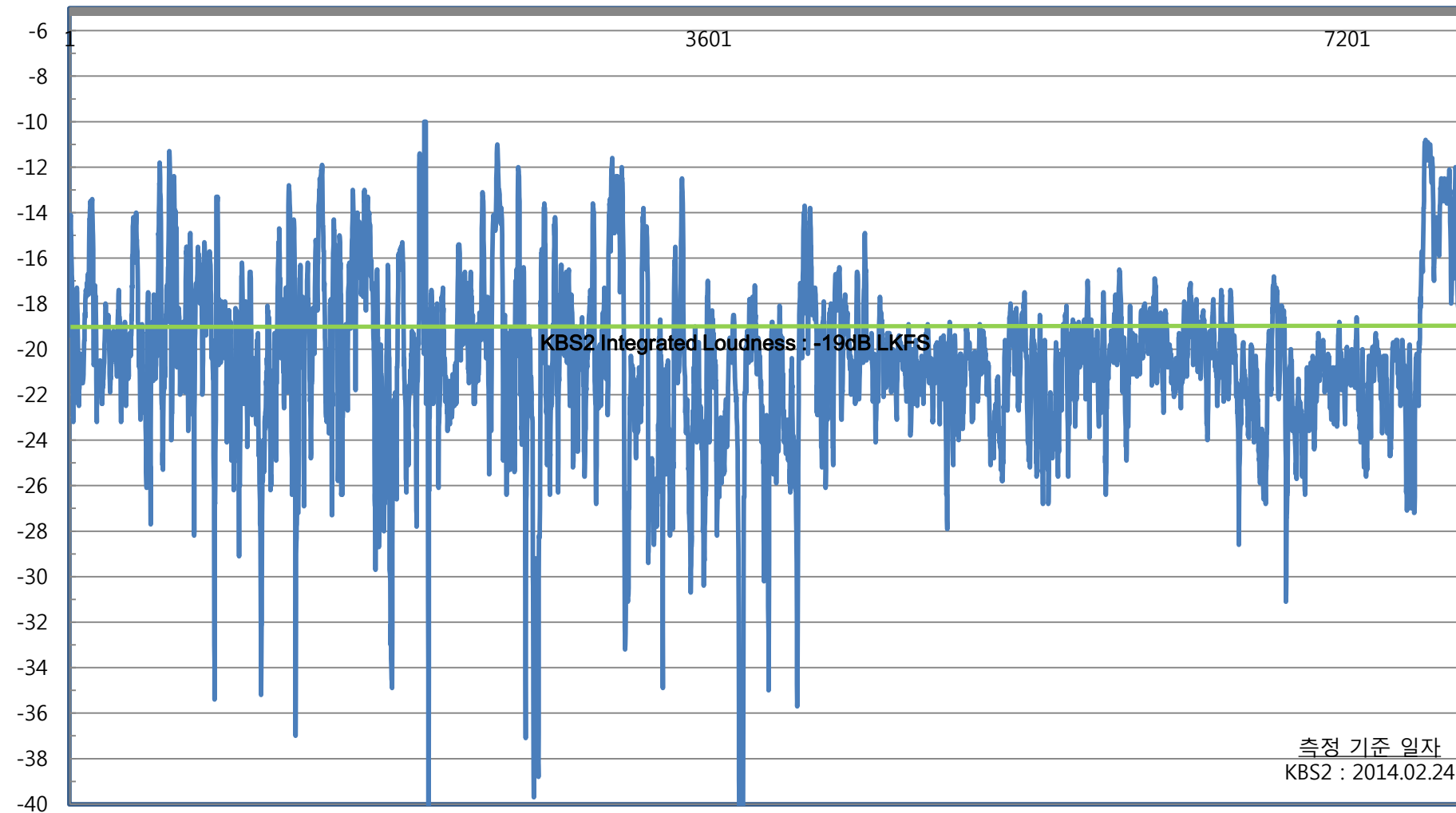
ITU-R BS.1770 Short-term Mode 라우드니스 비교분석

PM 23:55

AM 02:05

(dB LKFS)

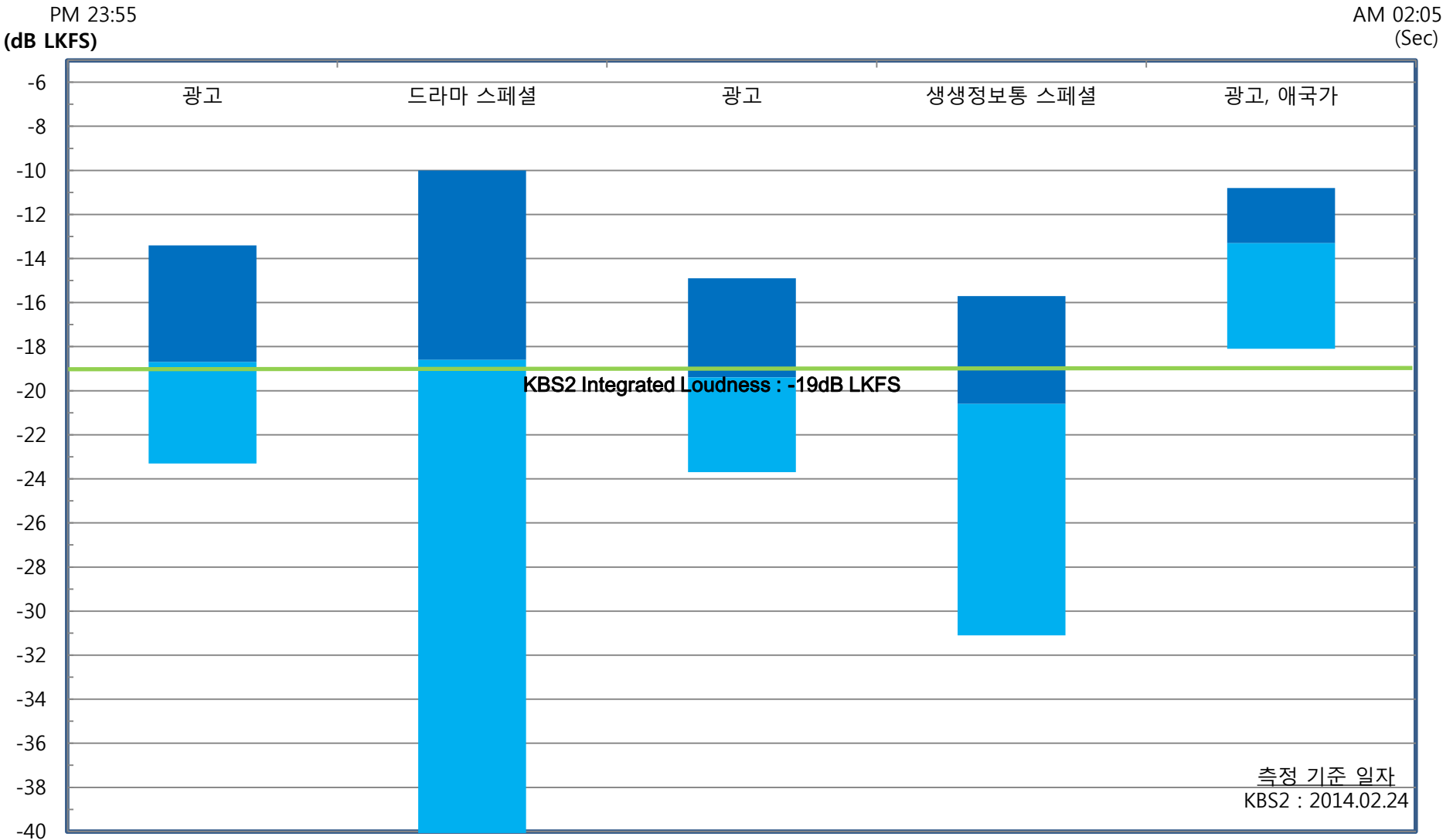
(Sec)



Infinite All [LKFS]	True Peak [dBTP]	Short-Term All Range [LKFS]	
-19	1	-42.2	-10

KBS2 프로그램 별(2014.02.24)

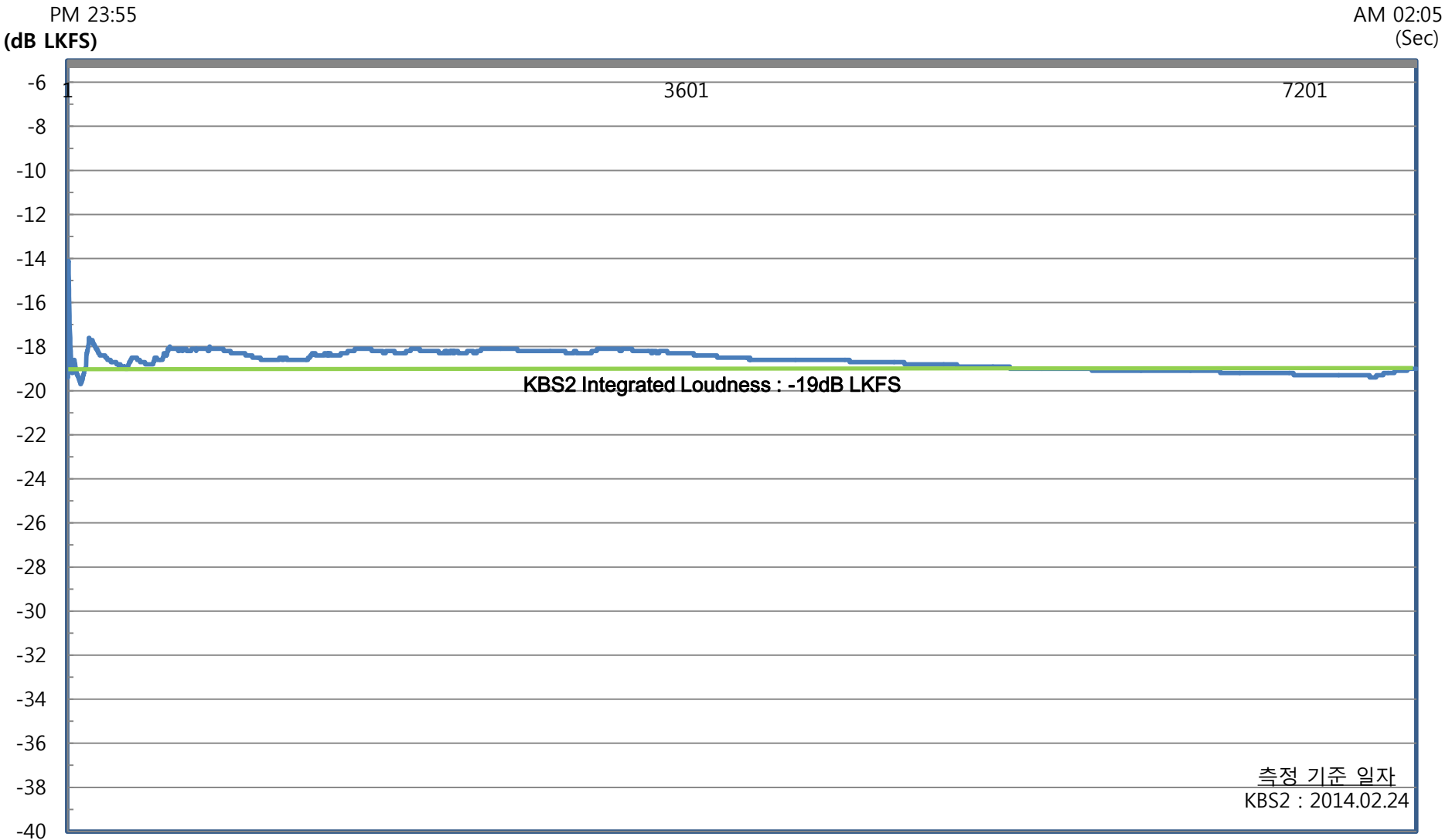
ITU-R BS.1770 Short-term Mode 라우드니스 비교분석



Infinite All [LKFS]	True Peak [dBTP]	Short-Term All Range [LKFS]	
-19	1	-42.2	-10

KBS2(2014.02.24)

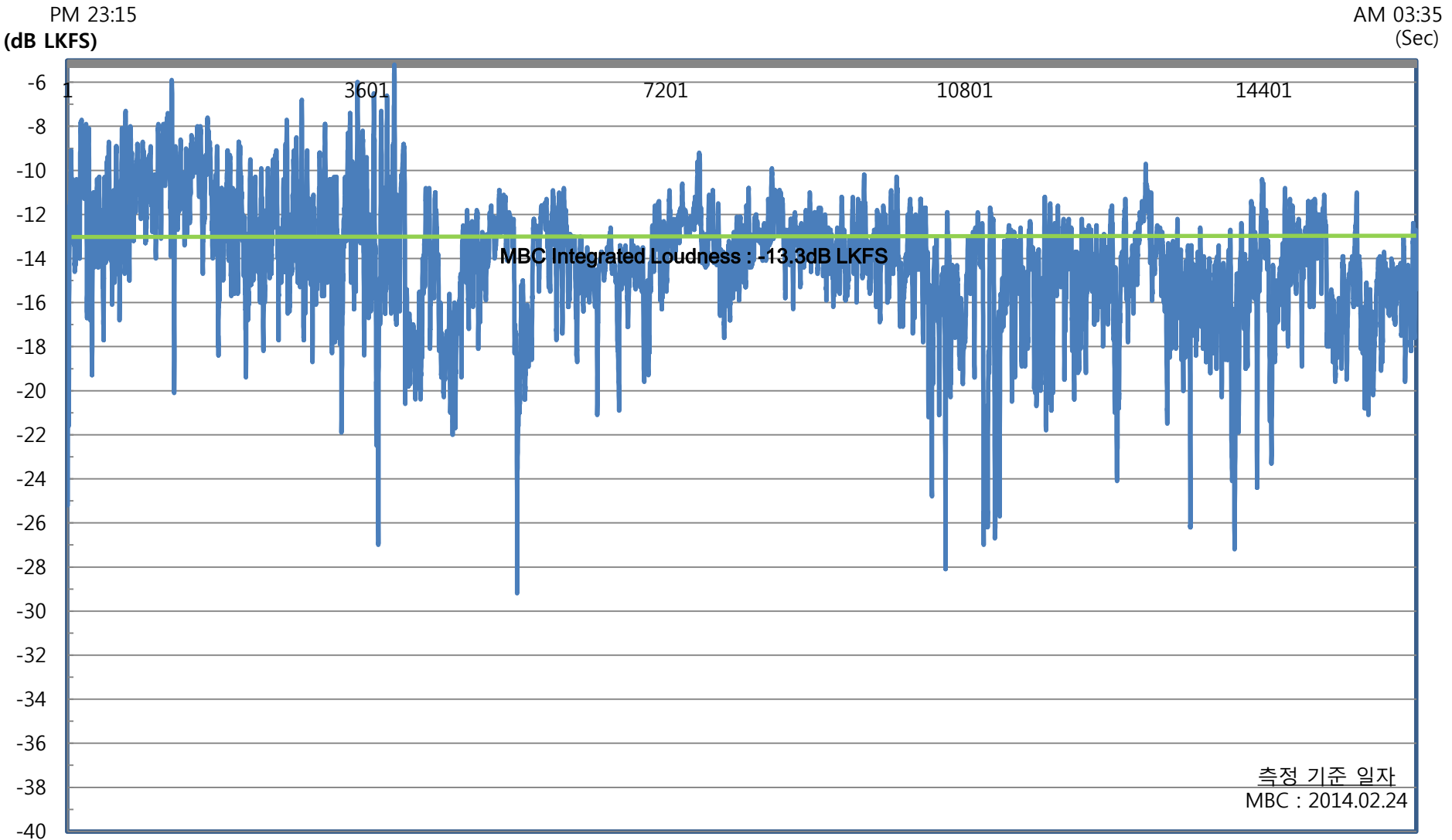
ITU-R BS.1770 Infinite 분석



Infinite All [LKFS]	True Peak [dBTP]	Short-Term All Range [LKFS]	
-19	1	-42.2	-10

MBC(2014.02.24)

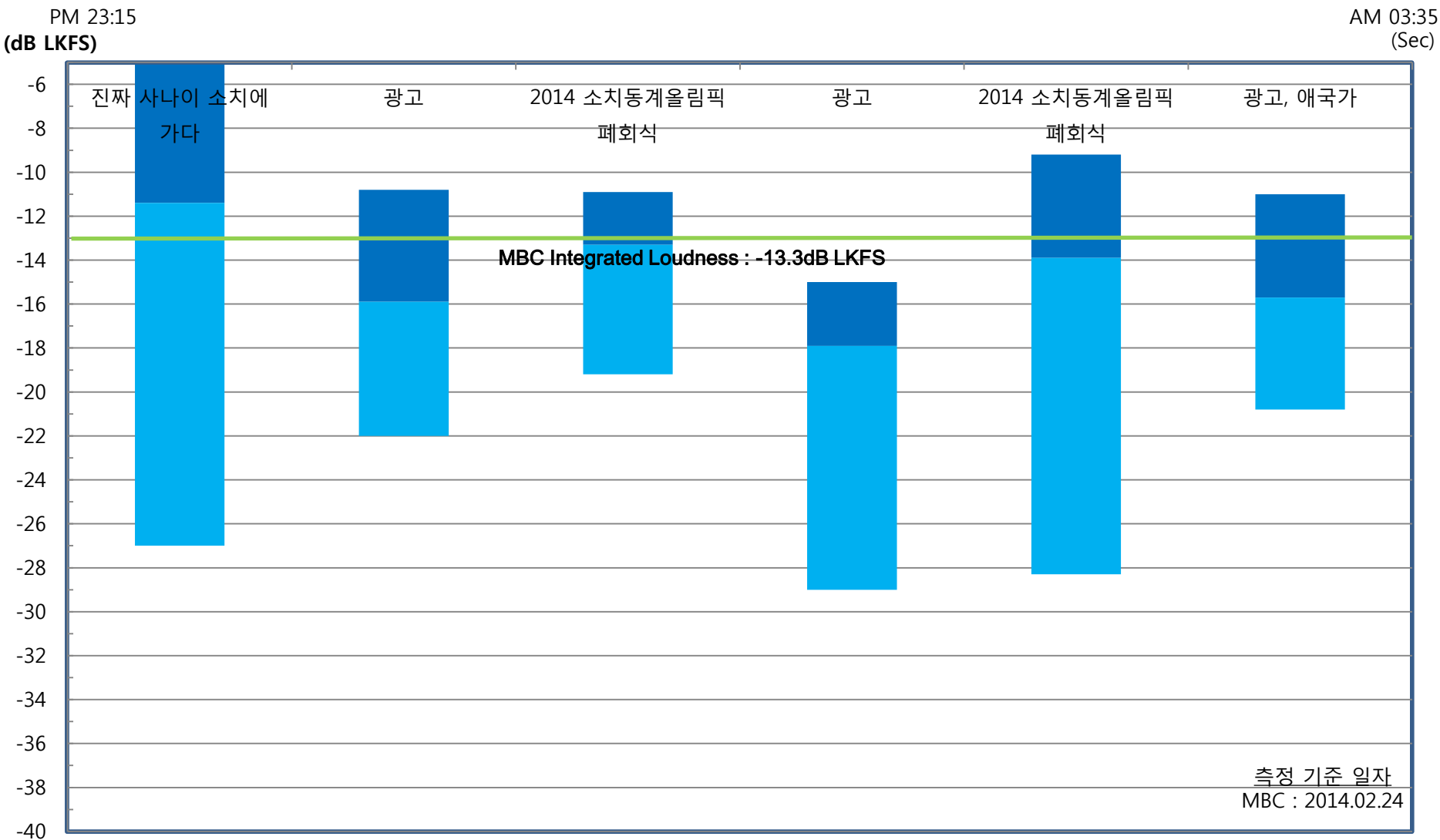
ITU-R BS.1770 Short-term Mode 라우드니스 비교분석



Infinite All [LKFS]	True Peak [dBTP]	Short-Term All Range [LKFS]	
-13.3	0.2	-29.2	-5.2

MBC 프로그램 별(2014.02.24)

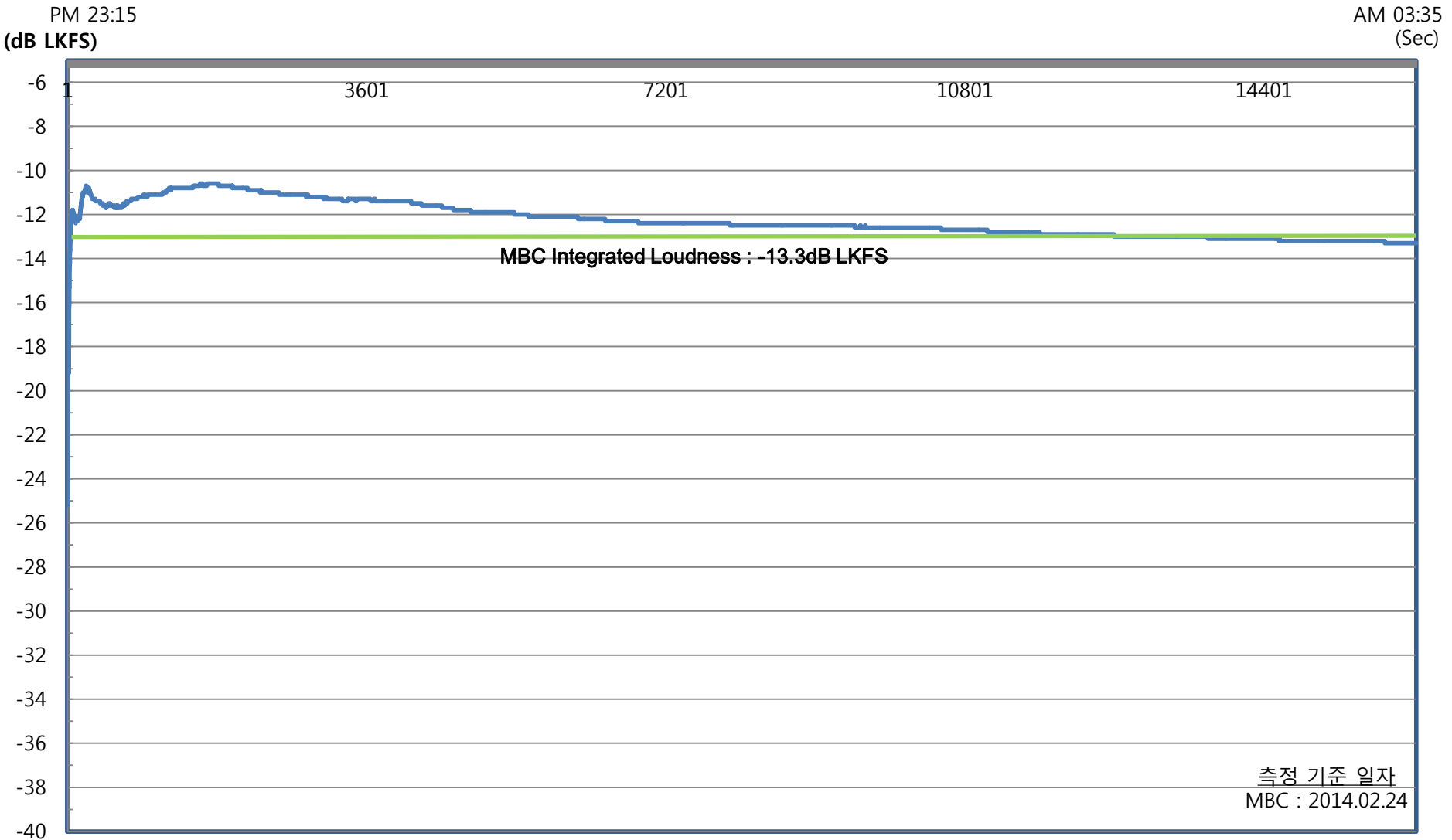
ITU-R BS.1770 Short-term Mode 라우드니스 비교분석



Infinite All [LKFS]	True Peak [dBTP]	Short-Term All Range [LKFS]	
-13.3	0.2	-29.2	-5.2

MBC(2014.02.24)

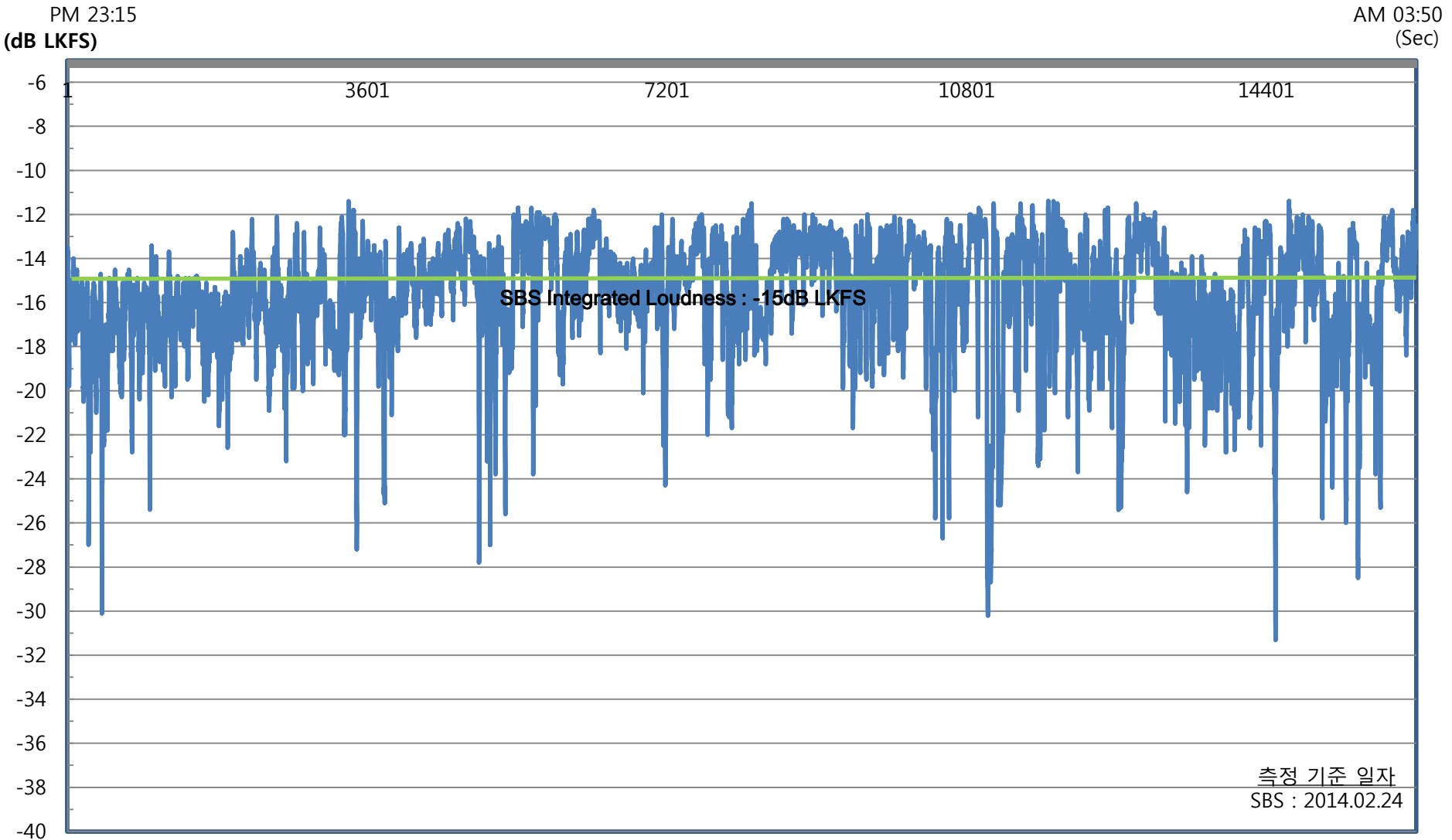
ITU-R BS.1770 Infinite 분석



Infinite All [LKFS]	True Peak [dBTP]	Short-Term All Range [LKFS]	
-13.3	0.2	-29.2	-5.2

SBS(2014.02.24)

ITU-R BS.1770 Short-term Mode 라우드니스 비교분석



Infinite All [LKFS]	True Peak [dBTP]	Short-Term All Range [LKFS]	
-15	-2.7	-31.3	-11.4

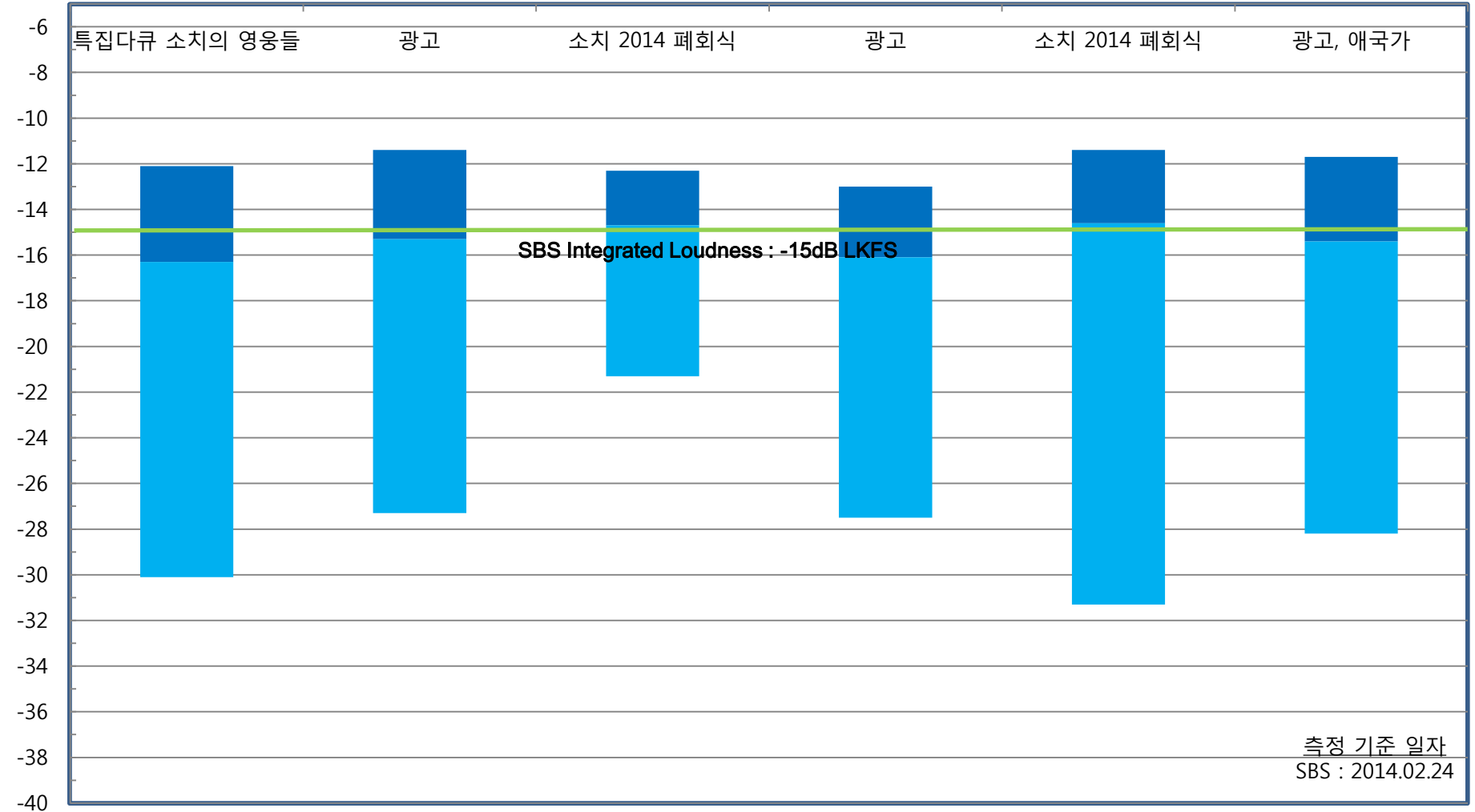
SBS 프로그램 별(2014.02.24)

ITU-R BS.1770 Short-term Mode 라우드니스 비교분석

PM 23:15

AM 03:50
(Sec)

(dB LKFS)



Infinite All [LKFS]	True Peak [dBTP]	Short-Term All Range [LKFS]	
-15	-2.7	-31.3	-11.4

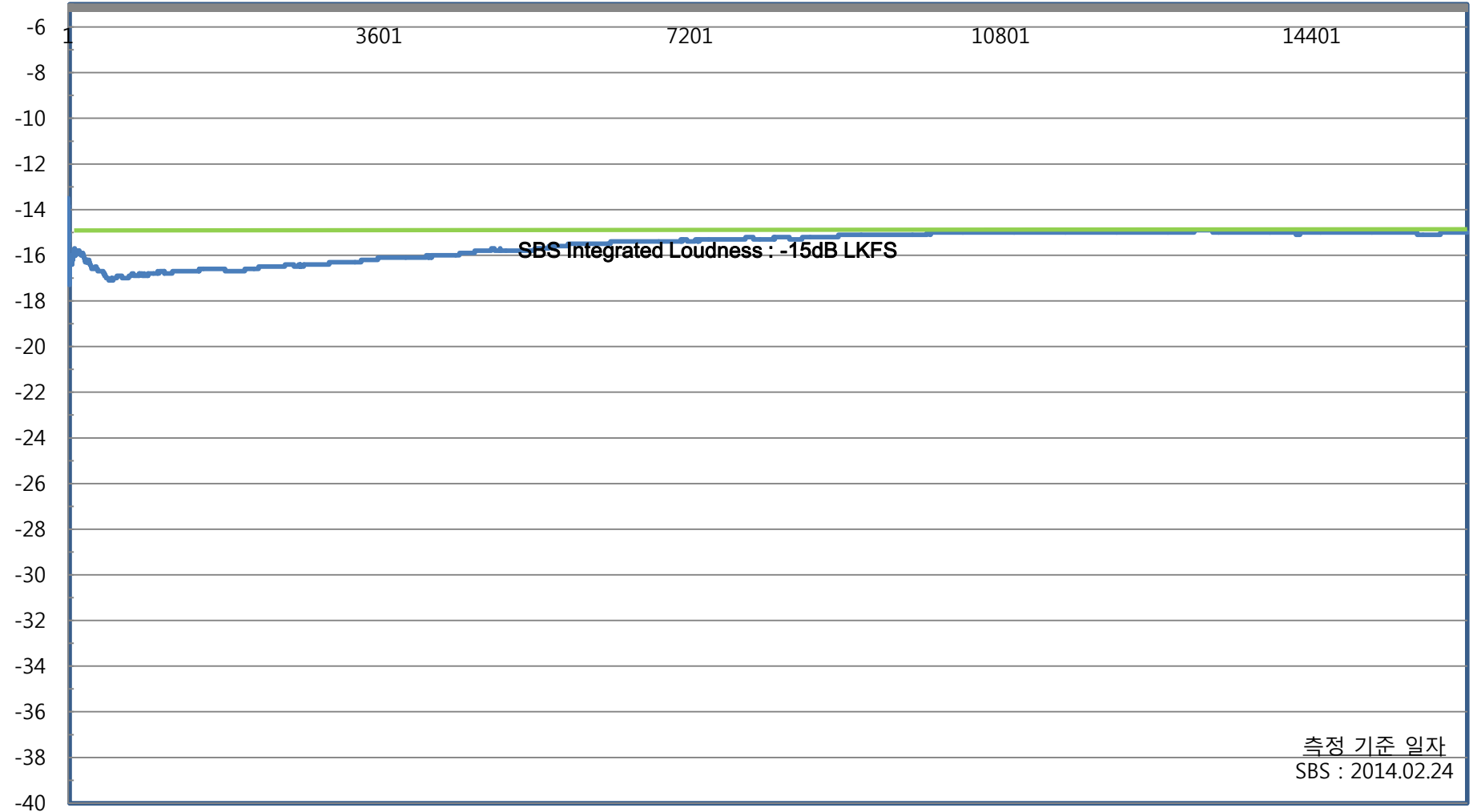
SBS(2014.02.24)

ITU-R BS.1770 Infinite 분석

PM 23:15

AM 03:50
(Sec)

(dB LKFS)



Infinite All [LKFS]	True Peak [dBTP]	Short-Term All Range [LKFS]	
-15	-2.7	-31.3	-11.4